



Feather and Fan Scarf with Tatting

Design: Anne Bruvold

This pattern may not be used for commercial production.

Yarn: Solberggarn Fiol, 4 balls of main colour and 1 ball of a contrasting colour.

5 mm needles

Tatting shuttles for thick thread or tatting needle.

Tip: make a swatch of the tatted edge with at least 5 rings and another following chart A to see if the gain of the knitting fits the tatting. If it does not, use a thicker or thinner knitting needle.

Knitting symbols



K on RS, P on WS



P on RS, K on WS



Yarn over



K2tog



SSK



sk2p (slip 1, k2tog, pass sl st over)



NB! The reports include the edge stitches. Slip the first mask on every row except for the rows on chart A where the first stitch is knit together with the second stitch.

Tatting symbols

R : ring

B : chain

- : picot

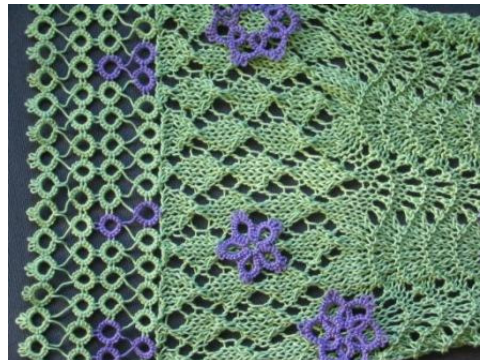
-- : large picot

+: join to picot

. : close the ring or shape the chain

Numbers: the number double stitches

+ (chart A): where to join the tatted edge to the knitting.

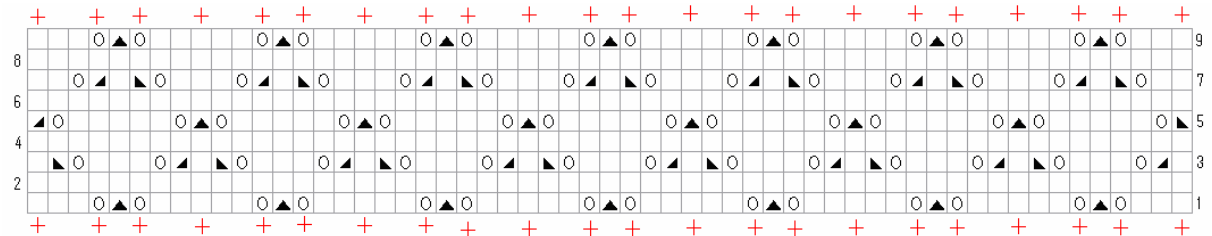


How to make it

Start by knitting the scarf.

Cast on 57 stitches and purl one row. Next row is knitted from the right side.

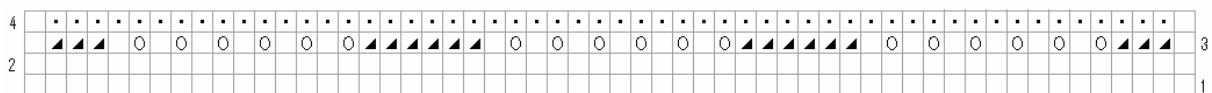
Chart A



Knit chart A once, then repeat rows 2-9 twice.

When purling the next row, purl two together once in the middle of the row so you get 56 stitches on the needle.

Chart B



Knit following chart B until the scarf is 1 metre or as long as you want it. Please note that the scarf might stretch when being used (depending on the yarn used) so you might want to make it a bit shorter.

Knit one row. When purling the next row, make one stitch in the middle of the row so you get 57 stitches on the needle.

Knit chart A once, then repeat rows 2-9 twice.

Cast off.

Tatted edge

The rings are turning in (R1) and out (R2) and is running along the short edge of the scarf. To make rings in another colour, use another shuttle with the second colour. Cut the main thread if you are making two or more rings of the second colour. Tie and hide ends to make them invisible after finishing the rings. When making only one ring in the second colour, tie the ends around the (uncut) main colour thread before hiding.

1st row

R1: 4-4-4-4.

R2: 4-4+4-4. Join to the corner of the scarf.

a

R1: 4+4-4-4. Join to the last p on the previous R1

R2: 4+4+4-4. Join to the last p on the previous R2 and to the next point marked on chart A

Repeat from *a* until you reach the other corner of the scarf.

R1: 4+4-4-4. Join to the last p of the previous R1

Cut and hide end.

2nd row

R1: 4-4-1--1-4-4.

R2: 4-4+4-4. Join to 2nd p on 1st R1 on 1st row.

a

R1: 4+4-1--1-4-4. Join to the last p of the previous R1

R2: 4+4+4-4. Join to the last p on the previous R2 and the 2nd p on the next R1 on 1st row.

Repeat from *a* until you have joined to the last R1 form 1st row.

R1: 4+4-1--1-4-4. Join to the last p of the previous R1

Repeat on the second short edge of the scarf.

Additional decoration

If you want, add extra tatted motifs in the contrasting colour. Make as many as you like and stitch them to the scarf, where you like.

Motif 1

(Shuttle only)

R1: 4-4-1--1-4-4.

R2: 4+4-1--1-4-4. Join to the last p on the previous ring

Repeat R2 twice more

R5: 4+4-1--1-4+4. Join to the last p on the previous ring and the first p on R1



Motif 2

(Shuttle and ball)

R: 4-4-4.

B: 4-4-1--1-4-4

a

R: 4+4-4. Join to last p on previous R

B: 4-4-1--1-4-4

Repeat from *a* four more times.

R: 4+4+4. Join to last p on previous R and 1st p on 1st R

B: 4-4-1--1-4-4



Motif 3

(Shuttle and ball)

R1: 6--6.

B: 4-4-1--1-4-4

a

R: 6+6. Join to p on R1

B: 4-4-1--1-4-4

Repeat from *a* four more times.

